



Supporting Christian Churches &
Chapels in Essex & East London

FECT NEWS 2010

incorporating the Accounts for 2009

NOTE FROM THE CHAIRMAN

We were blessed with a lovely day for Ride & Stride on 12 September. One of the churches I visited was St Michael and All Angels, Copford. It had a gnome festival which I went to look at – the W.I. had done ‘Calendar Girls’! I also had a look at the amazing wall paintings in the church, dating from about 1130. Some were destroyed when the south arcade was put in, the rest were covered with whitewash not to re-emerge finally until 1871.



Copford: Christ in Glory

In October I went to a concert in the church and it was lovely just to sit there listening to the music and gazing at the wall paintings. It really is worth a visit.

I would like to thank everybody who either took part or for their sponsorship of Ride & Stride: it is the most important fundraiser for us. I would also like to thank the Events Committee under Katie Griffith-Jones and Diana Thompson for all their hard work and a very varied programme last year – the Concert at Great Bardfield, the Cookery and Flower Arranging Demonstration, and the Christmas Fair at Hylands – all of which were a real success.

Claire Cottrell

GRANTS

In 2009 we offered a total of sixteen grants, of which all but one were to Anglican churches; the exception was Terling United Reformed Church. The total amount offered was £83,250. In addition there are three churches with 'in principle' offers subject to final details: Leaden Roding St Michael (£7,000), Corringham St Mary (£10,000) and Ashdon All Saints (£10,000). For the first time since setting up the Emergency Fund we gave £300 to Rawreth St Nicholas for temporary repairs to the large cracks which had appeared in the chancel as a result of the extremely dry summer.

We acknowledge the support we have received over the past eight years, by way of a block grant, from Waste Recycling Environmental Ltd (WREN). The grant from Landfill Tax Credits has helped us in the provision of grants to 58 churches in the south-west of the county.

We have continued to seek publicity for the Trust and during the year a number of churches to which we have made grants have featured in the local press, including Ilford St Mary, Heybridge St Andrew, and Little Totham All Saints. So much of the work that we fund ends up out of sight, on the roof or below the ground, but at Little Totham the renewal of the render had a very visible result, including an interesting intermediate stage after the old plaster was renewed. For a few weeks it was possible to examine the rubble beneath the skin, and appreciate just how the builders of our medieval churches managed to make do with a real mix of second-rate materials, held together with a lot of mortar and, no doubt, prayer.

David Lodge, Grants Committee Chairman

*Application forms for grants available from John Bloomfield, 01708 745273,
john.bloomfield@btinternet.com*



*Little Totham:
David Lodge (right),
parishioners, and
work in progress
(photo: Steve
Argent, courtesy of
Maldon & Burnham
Standard)*

GRANTS OFFERED IN 2009

Beaumont-cum-Moze St Leonard	Turret repairs	£750
Berden St Nicholas	Tiling and gutters	£3,000
Eastwood St David	Roof repairs	£1,000
Epping St John	Tower repairs etc	£4,000
Great Holland All Saints	Tower roof	£15,000
Great Ilford St Andrew	Gutters, pointing etc	£10,000
Kelvedon St Mary the Virgin	Lady Chapel roof	£1,000
Lawford St Mary	Damp penetration to tower	£3,500
Lindsell St Mary the Virgin	Roof tiling	£2,000
Little Ilford St Mary	Roof	£10,000
Paglesham St Peter	Tower & window masonry	£9,000
Rayleigh Holy Trinity	Tower masonry	£8,000
Stapleford Abbots St Mary the Virgin	Window masonry	£3,000
Stondon Massey St Peter & St Paul	Roof tiling	£8,000
Terling URC	Roof tiling	£4,000
Theydon Mount St Michael	Window stonework	£1,000



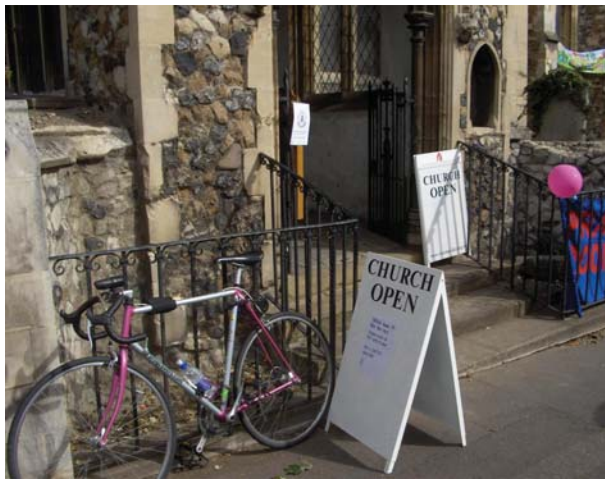
Terling URC



RIDE & STRIDE 2009

Once again we had glorious conditions for the Ride & Stride: 'Another lovely day for cycling around the lanes of Essex' – 'The weather was perfect for the event'.

At the time of going to print, the 2009 event has raised £108,430. This figure is up on the amount we reported this time last year for the 2008 event. So, in a year when most UK charities have reported a drop in donations, this is a fantastic result and the eighth year in a row where the total amount raised has been above £100,000.



Church open: St Leonard-at-the-Hythe, Colchester

enough time to clean St Michael's properly!' The team from the Memorial Community Church, Plaistow, were some of the visitors at Theydon Mount – they must be congratulated for raising £1,568 between them and for being some of our first users of the Ride & Stride justgiving.com website for raising sponsorship.

This year we would like to pay a special tribute to the riders and

In Theydon Mount, 'in the 12 years that I have manned St Michael's church, I have never welcomed so many riders/striders. I had a busy time welcoming people, serving refreshments and waving them off – not



Welcome refreshment at Maldon Baptist Church



The team from the Memorial Community Church, Plaistow

striders who have participated in the Ride & Stride for many years. To name just a couple: June Cocksedge (81 years) from Wanstead St Gabriel completed her 23rd cycle ride; Frank Kelley (86 years) from Springfield All Saints has participated every year since the event was inaugurated in 1982. We would also like to pay

tribute to (possibly) our oldest participant this year – Kathleen Patterson (91 years) from Christ Church URC, Chelmsford, who, with her friend, walked 12 miles and visited 23 churches. The on-going support of people like June, Frank and Kathleen – whether as cyclists, walkers or stewards – is just tremendous.

2009 was the first year that the National Churches Trust commissioned a PR consultant to raise the profile of Ride & Stride across the country. Some of you might have seen the article in The Times entitled ‘Can a nationwide series of walks save our churches?’. The main objective is to encourage a larger number of people to take part in Ride & Stride and, hence, raise more money by targeting those many people who don’t go to church regularly but who nevertheless wish to see churches well maintained. The work of the PR consultant will continue in 2010 and we wait to see whether a nationally increased profile of the Ride & Stride event will have an effect in Essex.

A big thank you to all who took part in 2009. The 2010 Ride & Stride will be on Saturday 11 September.

*Fiona Nelmes, County Organiser
01245 380365, fionanelmes@lineone.net
www.justgiving.com/fionanelmes*

STUDY DAYS

It was with great pleasure but some trepidation that I accepted the invitation to succeed James Bettley as Study Day leader for the Friends. Having long been an admirer of his scholarship and erudition, I felt that it would be difficult to try and follow in his footsteps. I have therefore taken a slightly different approach to the Study Days and I intend to concentrate more on talking about the churches in their historical and topographical context than on their architecture. I hope that this approach will prove interesting to the Friends. I also intend to have a common theme for the churches we visit on each Study Day.



A new start: Wethersfield

Coincidentally, my first Study Day began at Wethersfield, as did the very first Study Day for the Friends in 1989. In fine weather I arrived at the church to find a gratifying number of Friends had already assembled to listen to my first talk – from the entirely unaccustomed location of a pulpit. The theme for the day was Sir John Hawkwood of Sible Hedingham and his family connections. I therefore spoke about his son-in-law Sir William Coggeshall of Codham Hall as well as some of the outstanding features of this pleasant church. Members of the congregation joined us and kindly supplied us with refreshments after the talk.

We moved on to Shalford and looked at the parish church which, together with the nearby manor, forms a classic “church/hall complex” of a type which is so characteristic of Essex. Comparatively little has changed in this building for six hundred years, indeed it was pointed out that the lavatory currently being installed is the first alteration to the church since the Black Death. (Only a slight exaggeration.)

After lunch we reconvened at Gosfield where we concentrated on the



Full house at Shalford

monuments to successive lords of the manor, including Thomas Rolf, a lawyer hated in his own day for his cruelty and rapacity. He married twice, each time increasing his personal fortune, his second wife being heir to the Hawkwoods' estates in Essex. Our last destination was Sible Hedingham, where we concluded our Study Day gathered round the monument which is either the tomb or cenotaph of Sir John Hawkwood. It was in this church, however, that we met our only significant problem when we encountered a group of visiting bell-ringers who had been double-booked with us and were determined to ring the bells as I made my introductory remarks. Fortunately Marion Scantlebury had a quiet but very persuasive word with them and we were able to continue in peace. Refreshments kindly arranged by members of the congregation followed my talk.

My grateful thanks go to Marion for her help and advice in organising the day and to James for his encouragement and support during the preparation stage.

Our next Study Day will be on 5 May and I am looking forward to leading the Friends round a cluster of churches each of which has a connection with the Tyrell family.

Christopher Starr.

Sarah White has now taken over the organisation of the Study Days from Marion Scantlebury, and can be contacted on 01245 233363, sarahwhite279@aol.com

TREASURER'S REPORT

At the Friends of Essex Churches Trust we are fortunate that our income is spread across a number of differing sources: membership subscriptions and donations, Ride & Stride and our other events, plus our investment income and that from legacies. Experience has shown that when one of these is adversely affected the other areas generally manage to stand their ground. In 2009 most sources of income held up well, some even managed improvement, and the only area where income was adversely affected was the interest we receive on our cash deposits, which fell by over £10,000 year on year. I must also acknowledge with grateful thanks the final instalment of the legacy from Mr A.J. Heaple.

At the beginning of the year the Trustees set a more modest grant budget of £125,000. However, by the year end, only £83,550 had been allocated, although the Grants Committee had several applications for large sums agreed in principle from their December meeting. No doubt these will become fully approved in the near future. One of the great strengths of FECT is that the organisation, although managed in a highly professional manner, is staffed entirely by volunteers. This enables us to keep our expenses to a minimum with support and governance costs representing only two pence in every pound raised.

Our cash balances remain high and well spread and it is pleasing to report a recovery of 9% in our investment values. Overall we have seen an improvement in our reserve position which should enable us to be more generous in our giving during 2010 with an annual grant allocation of £152,000.

Finally it is time for me to say goodbye. During my 21 years' involvement with FECT I have developed a deep affection for these wonderful buildings which carry our heritage in every tiny detail. My best wishes to you all.

Ian Dudley, Hon. Treasurer

	Restricted Funds	Un-restricted Funds	Total 2009
	2009	2009	£'000
	£'000	£'000	£'000
Total 2008			
£'000			
20.6	0.0	18.7	18.7
26.1	0.0	27.9	27.9
0.2	0.0	1.5	1.5
59.7	0.0	61.3	61.3
16.1	0.0	16.5	16.5
22.4	0.0	13.2	13.2
0.1	0.0	0.1	0.1
Total Income	0.0	139.2	139.2
(0.6)	0.0	(0.9)	(0.9)
(1.9)	0.0	(1.8)	(1.8)
(2.2)	0.0	(3.2)	(3.2)
(4.1)	0.0	(3.6)	(3.6)
(6.6)	0.0	(6.8)	(6.8)
(194.4)	0.0	(81.6)	(81.6)
Total Expenditure	0.0	(97.9)	(97.9)

(64.6)	Net incoming/(outgoing) resources	0.0	41.3	41.3
(69.6)	Gains/(losses) on investments	0.0	18.3	18.3
(134.2)	Net movement in Funds	0.0	59.6	59.6
Summary balance sheet as at 31 December 2009				
2008		2009		
£'000		£'000		
202.0	Investments - market value	220.3		
257.4	Cash and deposits	232.4		
5.6	Sundry debtors	10.4		
465.0	Total assets	463.1		
(143.8)	Undrawn grants	(82.3)		
(1.8)	Creditors	(1.8)		
319.4	Net assets	379.0		
Represented by				
318.4	General Fund (unrestricted)	378.2		
0.2	Gazetteer Fund (unrestricted)	0.0		
0.8	Landfill Tax Credits (restricted)	0.8		
319.4		379.0		

Auditors Statement to the Members of the Friends of Essex Churches Trust. We have examined the above summarised financial statements. **Respective Responsibilities of Trustees and Auditors.** The trustees are responsible for preparing the summary financial statements in accordance with applicable United Kingdom law and the recommendations of the charities SORP. Our responsibility is to report to you our opinion on the consistency of the summarised financial statements with the full financial statements and Trustees' Annual Report. We also read other information contained in the summarised annual report and consider the implications for our report if we became aware of any apparent misstatements or material inconsistencies with the summarised financial statements.

Basis of Opinion. We conducted our work in accordance with Bulletin 2008/3 issued by the Auditing Practices Board. **Opinion** In our opinion the summarised financial statements are consistent with the full annual financial statements and the Trustees' Annual Report of The Friends of Essex Churches Trust for the year ended 31 December 2009.

Edmund Carr LLP Chartered Accountants and Statutory Auditors 146 New London Road, Chelmsford, Essex CM2 0AW

17 March 2010

‘TERRA FIRMA’

One of the many fascinations of the English language is that a single word can often have different meanings. Sometimes these differences are complete opposites. Take the word ‘cleave’, meaning both to divide and to unite. Both meanings are very definite. Cleave apart is to do so forcefully. Cleave together is to do so passionately. Nothing wishy-washy.

Likewise the word ‘rock’. Rock the noun is hard and stable. But rock the verb is all about movement: gentle as in the hand that rocks the cradle or violent as in rock and roll. Sailors amongst you will have been rocked gently by the swell or thrown violently in the storm in constant fear of being cast on the rocks, hard, jagged and unyielding. I can recall being seated in a car at Ardnamurchan Point. This is the most westerly place in mainland Britain. A Force 10 storm was blowing and the car was rocking unnervingly on this exposed headland.

Rock is a word familiar to our faith. Peter the Rock upon whom the Church is built. ‘Rock of Ages, cleft for me, let me hide myself in Thee’. Rock of Ages firm and dependable yet cleft for humanity. A cleft in which to take refuge. A cleft in which to cleave to the Almighty. Terra firma.

You, the members of and donors to ‘The Friends’, are our terra firma. Year by year you are our bedrock. Year by year you consistently subscribe around £46,000. This year you sent us £47,000, slightly more than the average despite the economic problems which have hit many charities.



St Peter, Great Totham

Numbers are important as well as loyalty. I have been very pleased to welcome 56 new members during 2009, including twenty in just one evening at Ingatestone Hall thanks to the efforts of the Events Committee. Notified lapses come to 28 but there will be un-notified ones as well.

Every subscription and donation is very welcome and much appreciated, but we are especially indebted this year to the Augustine Courtauld Trust, the Essex Club, Lodge & Sons (Builders), and the Moody Charitable Trust, who have all sent us substantial amounts. The Southend Branch is always an essential element of our activities and contributed £1,900 to the Trust funds in 2009.

On behalf of the Trust, I thank everyone very 'firmly'.

SUBSCRIPTION REMINDER

We must not forget 2010. Many of you will have committed your contribution to us by Standing Order. Others will have already sent me a cheque. For everyone else, now is the best time to renew your subscription, while it is in your mind.

There is a separate sheet with FECT NEWS 2010 to help you to make your renewal quickly and easily by post to me, the Membership Secretary. If you would like to set up a Standing Order or have not already Gift Aided the amount, there are sections to do this on the Renewal Form. Please remember that any new Standing Order will cancel an existing one.

To keep our overheads to a minimum, we do not acknowledge subscriptions as a matter of course, so please accept our thanks now, in advance. But if you would like a receipt, please indicate accordingly when you complete the Renewal Form and I will be happy to send one.

Keith Gardner, Membership Secretary
01708 688576, keith@thegreenwood.me.uk

SOUTHEND BRANCH

It's nice to record we have equalled the 2008 donation to central funds of £1,900, and the Committee thank you all for your splendid support of the outings in 2009. Membership of the Branch is still close to 90 and we expect to exceed this in 2010. Sadly, we must report the passing of Margaret Arthur, Miss Thame and Unis Bingley, long-term and much-respected members. Unis will be remembered for her efficient booking and coaching arrangements over a good few years.

In April, repairs at Lawford St Mary required a change of venue to St Mary the Virgin, Ardeigh. We entered to the wonderful sound of organ music and received a warm welcome from the Rector and Organist, who deserves our sincere thanks for making the last-minute arrangements.

Tea was taken with the Wrabness W.I. after a short visit to All Saints' Church, where friendly connections told us of the history and continuing work of preservation of this sweet little church. Outside were glorious views across the Stour Estuary. We had the great pleasure of having Julia Abel Smith, the then County Chairman, with us throughout the day.



Ardeigh: south porch

The County AGM at Bocking in May passed, as always for this event, with much friendship all round. Then in June, on a glorious day, we arrived at Hitchin to see the Church of St Mary. It was well worth the journey – that is, once the doors had been unlocked!

However, perhaps the outstanding part of the day was the W.I. tea, in a barn of c.1751, at Standon Green Farm – many of us seated on straw bales. What a welcome we received, and a superb feast! Adding to the interest were Alfie the dog, piglets, cows, and of course the bull.

In September, to All Saints Epping Upland: a nave of exceptional length, no

windows on the north side and a magnificent altar carving. The enthusiastic Churchwarden kept all awake!

Then to the Harlow church of St. Mary at Latton, found after an unplanned tour of the town. A fine greeting on arrival: an instant, much-desired superb tea, then quite a climb to the church for a talk by a noted historian on the building and origins of Harlow.



Epping Upland: altar and reredos, 1913

*Don Woracker, Southend Branch
01702 203027, donworacker@hotmail.com*

GIFT AID



Little Baddow: Henry Mildmay's wives, circa 1639

This concession from the Inland Revenue continues to form a welcome addition to our income, generated both from Ride & Stride and from reclaims on membership subscriptions and events.

The total sum in Gift Aid that I claimed for 2009 amounted around £20,000. (It is difficult to give a precise figure because some of the claims overlap between years.)

Visiting churches throughout the county as I do, from time to time I notice that many parishes still do not make full use of this very valuable tax concession. In Little Baddow we make sure that every pew has a supply of Gift Aid envelopes both available to be used for collections during service and for visitors' donations. 28p in the pound is a rate of interest not often offered by the bankers! Parish Treasurers – please think Gift Aid!

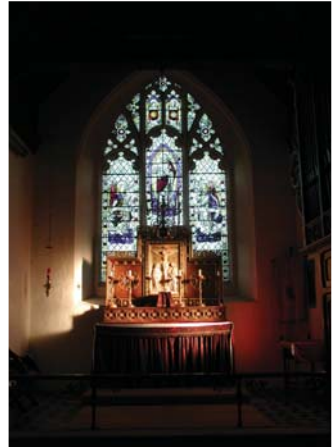
Alastair Stewart, Gift Aid Secretary

EVENTS

Your Events Committee laid on another varied programme in 2009, which resulted in a total of £9,000 being transferred to the main FET account.

In September, we were treated to an concert of music in Great Bradfield church performed by cellist Orlando Jopling – part of his amazing ‘cello pilgrimage’, which he began (at Fingringhoe) in 2007 and has so far raised nearly £25,000 for church repairs. The evening was much enjoyed by all, as were the delicious canapés and wine.

The annual Christmas Fair was held once again at Hylands Park in October and was a great success. Numbers were slightly down on the previous year in terms of people through the door and amount taken, but this was not unexpected given the economic downturn and the fact that it poured with rain. Overall, it was a marvellous day with wonderful shopping, happy stallholders, and an excellent venue. We received very positive feedback yet again from everyone who attended,



Great Bardfield

and we are sure we will be able to improve on our figures next year.

Finally, in December, a completely new venture for us: a flower-arranging and cookery demonstration at Saling Village Hall, Great Saling, in November, which was attended by 70 members and friends. Alice McLaren gave us all invaluable cooking tips and recipes and managed it all with an amusing running commentary. We then had a delicious lunch and a glass of wine, following which Michael Goulding OBE did six enormous flower arrangements in an hour and entertained with some classic anecdotes. All the food that had been prepared and the flower arrangements were included in the raffle at the end, and everyone seemed to go home very happy indeed.

We look forward to seeing many of you at our events in 2010.

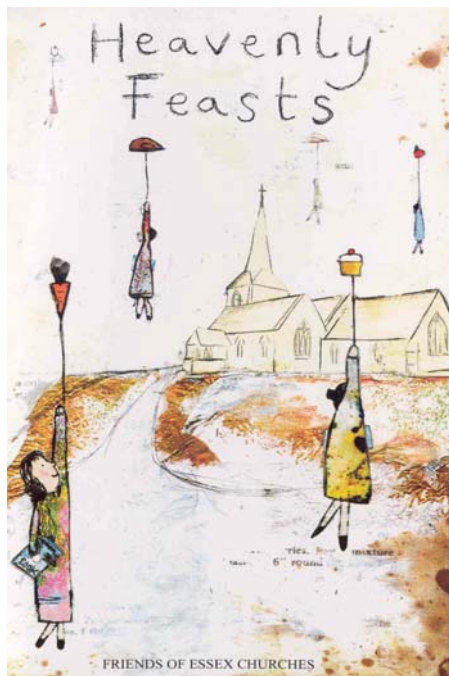
Diana Thompson, Events Committee
01371 872246, dianathompson113@btinternet.com

HEAVENLY FEASTS

A few copies of Heavenly Feasts, full of Friends' favourite recipes, are still available from Diana Thompson for £5 + £1.50 p&p. Try the recipe below, then buy the book!

Tagine of Lamb (serves 6-8)

1 tbsp sunflower oil
2lb neck fillet of lamb cut into 1in. pieces
2 large onions, coarsely chopped
3 fat garlic cloves, crushed
175g (6oz) ready-to-eat dried apricots
1 tsp ginger
1 tsp ground cinnamon
good pinch hot chilli powder
generous pinch of saffron stamens, soaked in 3 tsp hot water
2 tbsp honey
1 x 800g chopped tomatoes
salt and pepper



Pre-heat oven to 160°C/325°F/GM3.

Heat oil in a large frying pan and brown the lamb in batches. When brown remove with a slotted spoon and put onto a plate to one side. Add the onions and garlic to the pan, stir then cover and cook over a gentle heat for about 10-15 minutes until soft. Increase the heat and add the apricots, spices, including saffron and soaking liquid, honey, tomatoes and browned lamb to the pan. Bring to the boil, season, cover and cook in the pre-heated oven for about 2 hours until meat is very tender. Check seasoning. Garnish with parsley and serve with couscous flavoured with mint and parsley. To freeze: pack into a freezer-proof container and freeze for up to 3 months. Thaw overnight in the fridge, re-heat until piping hot.

Recipe by Jessica Cottrell, Birch

CALENDAR FOR 2010

Wednesday 5 May

SPRING STUDY DAY

The first of our two Study Days for 2010, to include visits to Buttsbury, Great and Little Burstead, and East Horndon. Details from Sarah White (01245 233363, sarahwhite279@aol.com).

Thursday 13 May

SPRING MEETING AND AGM

Waltham Abbey, 2.30 pm. To include a talk on the Abbey and tea.



Waltham Abbey

Saturday 11 September

RIDE & STRIDE

To raise funds for the Trust and participating churches. 10.00 am to 6.00 pm.

Saturday 2 October

AUTUMN STUDY DAY

Details to be announced later.

Tuesday 12 October

GRAND CHRISTMAS FAIR

Hylands House near Chelmsford, 10.00 am to 3.00 pm. Many new stalls. Details later from Diana Thompson (01371 872246, dianathompson113@btinternet.com).

Other events are still being planned for 2010 – please visit our website, www.foect.org.uk, for up-to-date information.

FRIENDS OF ESSEX CHURCHES TRUST 2009-10

Patrons: the Bishops of Brentwood and Chelmsford, H.M. Lord Lieutenant for Essex

President: George Courtauld

Executive Council and Trustees:

Chairman: Claire Cottrell; Vice-Chairman: James Bettley; Hon. Treasurer: Ian Dudley; Hon.

Secretary & Hon. Membership Secretary: Keith Gardner

Katie Griffith-Jones, David Lodge, Ralph Meloy, Fiona Nelmes, Christopher Starr, and Don Woracker

Advisory Council:

John Bloomfield, Ray Clements, Ann Hilder, David Hoppit, Simon Mynott, Neil Stedman, Sir Alastair Stewart, and Sarah White

Registered Charity 236033

www.foect.org.uk